



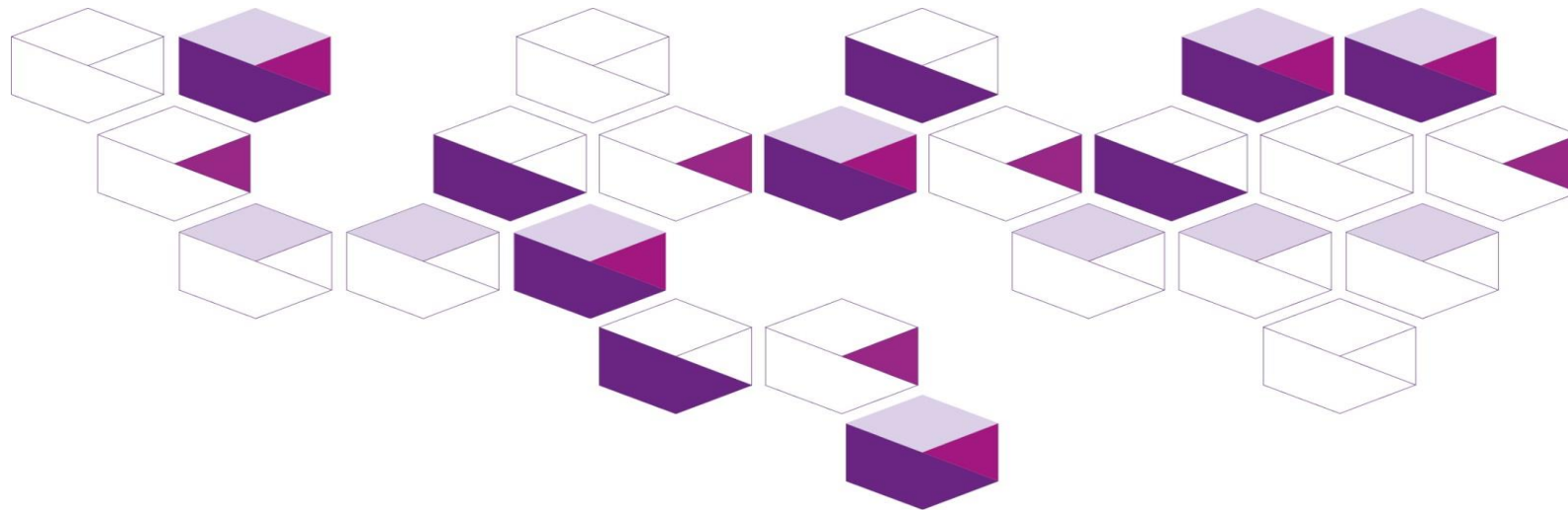
Government of **Western Australia**
South Metropolitan Health Service

City of Cockburn Injury and poisoning data

August 2020

South Metropolitan Health Service

Health Promotion



Acknowledgement

The South Metropolitan Health Service respectfully acknowledges the Aboriginal Noongar people both past and present, the traditional owners of the land on which we work.

Notes

In this report:

The terms 'City of Cockburn' and 'Cockburn LGA' are used interchangeably.

Within Western Australia, the term Aboriginal is used in preference to Aboriginal and Torres Strait Islander, in recognition that Aboriginal people are the original inhabitants of Western Australia. No disrespect is intended to our Torres Strait Islander colleagues and community.

Important disclaimer

All information and content in this material is provided in good faith by the WA Department of Health, and is based on sources believed to be reliable and accurate at the time of development. The State of Western Australia, the WA Department of Health and their respective officers, employees and agents, do not accept legal liability or responsibility for the material, or any consequences arising from its use.

Abbreviations

ASR	Age-standardised rate
CI	Confidence interval
DoH	Department of Health, Western Australia
LGA	Local government area
WA	Western Australia
ICD 10	International Classification of Diseases, 10 th Revision
ED	Emergency Department

Contents

Acknowledgement	2
Notes	2
Important disclaimer	2
Abbreviations	2
Contents	3
Purpose	4
Health Datasets	4
Data sources and data period	4
Inclusion criteria	4
Methods and definitions	5
Limitations of the data	5
Notes	5
Hospitalisations	6
Costs	8
Emergency Department presentations	9
Fatalities	10

Purpose

The health-specific data contained in this document is provided by South Metropolitan Health Service, Health Promotion to the City of Cockburn to support local government public health planning.

Health datasets

All data provided is sourced from within the Epidemiology Branch, Public Health Division, Department of Health, Western Australia.

Data sources and data period

- WA Hospital Morbidity Data System (2014-2018)
- WA Health Emergency Department Data Collection (2004-2018)
- WA Death Data (2013-2017)

Inclusion criteria

- WA residents only.
- Hospitalisations due to injury and poisoning are identified by principal diagnosis codes (ICD-10-AM) ranging from S00 to T98 inclusive.
- Emergency department presentations due to injury and poisoning are identified by the following major diagnostic blocks (ICD-10-AM): (1) Poisoning, (1C) Drug reaction, (2A) Injury, multiple sites, (2B) Injury, single site, major, and (2BA) = Injury, single site, minor.
- Death due to injury and poisoning are identified by Minor10.

Methods and definitions

ASR	Age-standardised rate per 100,000 persons per year, standardised using indirect method against the 2001 Australian population. ASRs are only provided where case counts > 20, as otherwise they are unreliable.
ASR LCI and ASR UCI	Lower and upper limits of 95 per cent confidence intervals for ASR. Statistically we are 95 per cent confident that the true rate (ASR) falls between the lower and upper confidence interval values. Two rates are considered significantly different (at the 0.05 level) if their confidence intervals do not overlap. Otherwise, if their confidence intervals overlap, the two rates are not significantly different.

Limitations of the data

It is important to be cautious when comparing the data in this document to that of previous data and not to overstate any perceived differences between results. Changes could be due to a change in the demographic mix of the population, particularly as there have been some minor revisions to LGA boundaries over time.

Results are also not comparable between LGAs because for each LGA the minimum number of years necessary to make up a sufficient sample has been used. This means that the time period for other LGAs may differ.

Notes

- All rates are per 100,000 persons per year.
- ASR = Age-standardised rate ; ASR LCI=95 per cent lower confidence limit for ASR; ASR UCI=95 per cent upper confidence limit for ASR
- Counts less than 5 have been suppressed in this report to protect privacy and data confidentiality.
- Age standardised rates are not provided when the total event numbers for the population being studied are less than 20 due to unreliable rates that are derived.

Hospitalisations

Table 1: Number and rates of hospitalisations due to injury and poisoning by injury category and age groups, Cockburn LGA, WA, 2014 - 2018 (combined).

Injury category	Numbers by age group					Total	Age group specific rates					ASR	ASR LCI	ASR UCI
	0-14	15-24	25-44	45-64	65+		0-14	15-24	25-44	45-64	65+			
Transport accidents	92	196	367	274	148	1077	82.4	273.4	197.9	216.3	235.1	194.1	182.4	205.7
Accidental falls	499	175	346	624	2189	3833	446.7	244.1	186.6	492.6	3477	738	714.4	761.6
Exposure to mechanical forces	355	292	614	369	173	1803	317.8	407.3	331.1	291.3	274.8	323.3	308.3	338.4
Accidental drowning, submersion, threats to breathing	18	0	N/A	5	N/A	28	16.1	0	0.5	3.9	6.4	4.8	3	6.6
Exposure to electricity, radiation, extreme temperature/pressure	N/A	N/A	35	0	N/A	40	0.9	4.2	18.9	0	1.6	6.6	4.5	8.6
Exposure to smoke, fire, flames, hot substances	36	16	25	26	10	113	32.2	22.3	13.5	20.5	15.9	20	16.3	23.7
Exposure to venomous plants, animals, forces of nature	16	9	20	11	8	64	14.3	12.6	10.8	8.7	12.7	11.7	8.8	14.6
Accidental poisoning	34	27	72	66	45	244	30.4	37.7	38.8	52.1	71.5	44	38.4	49.5
Other external causes of accidental injury	98	358	682	444	202	1784	87.7	499.4	367.8	350.5	320.8	319.8	304.8	334.7
Intentional self-harm	22	213	232	135	22	624	19.7	297.1	125.1	106.6	34.9	112.2	103.4	121.1
Assault & other injury caused by other person(s)	12	93	228	46	16	395	10.7	129.7	123	36.3	25.4	68.1	61.4	74.9
Event of undetermined intent	N/A	16	24	20	11	N/A	1.8	22.3	12.9	15.8	17.5	13.2	10.2	16.3
Adverse effects due to drugs & other substances	47	30	29	26	38	170	42.1	41.8	15.6	20.5	60.4	31.8	26.9	36.6
Medical misadventure	N/A	N/A	5	9	24	43	0.9	5.6	2.7	7.1	38.1	8.1	5.7	10.6
Abnormal reaction following procedure	159	196	662	731	716	2464	142.3	273.4	357	577	1137	455.4	437.3	473.6
Sequelae of external causes of morbidity & mortality	0	0	N/A	0	0	N/A	N/A	N/A	N/A	N/A	N/A	N/A	N/A	N/A

All rates are per 100,000 population

ASR = Age-standardised rate; ASR LCI = 95 per cent lower confidence for ASR; ASR UCI = 95 per cent upper confidence limit for ASR.

Note 1: Counts less than 5 have been suppressed to protect privacy and data confidentially.

Note 2: Age standardised rates are not provided when the total event numbers for the population being studied are less than 20 due to unreliable rates that are derived.

Table 2: Length of stay of hospitalisation (number of days) due to injury and poisoning by injury category, gender, age group and Aboriginal status, Cockburn LGA, 2018.

Injury category	Gender		Age group					Aboriginal status	
	Male	Female	0-14 years	15-24 years	25-44 years	45-64 years	65+ years	Non-Aboriginal	Aboriginal
Transport accidents	696	248	105	68	335	167	269	934	10
Accidental falls	1917	2914	135	54	364	502	3776	4770	61
Exposure to mechanical forces	381	189	65	87	174	140	104	538	32
Accidental drowning, submersion, threats to breathing	<5	<5	<5	0	0	<5	0	<5	0
Exposure to electricity, radiation, extreme temperature / pressure	7	6	0	<5	11	0	0	13	0
Exposure to smoke, fire, flames, hot substances	32	84	10	15	5	81	5	102	14
Exposure to venomous plants, animals, forces of nature	8	<5	<5	<5	<5	<5	<5	11	0
Accidental poisoning	38	59	5	13	15	29	35	85	12
Other external causes of accidental injury	431	308	33	108	202	259	137	733	6
Intentional self-harm	198	180	11	180	71	91	25	372	6
Assault & other injury caused by other person(s)	119	49	5	22	89	19	33	134	34
Event of undetermined intent	17	60	0	<5	<5	67	<5	76	<5
Adverse effects due to drugs & other substances	29	41	8	5	5	11	41	70	0
Medical misadventure	9	10	<5	<5	<5	<5	11	19	0
Abnormal reaction following procedure	814	816	40	55	287	509	739	1584	46
Sequelae of external causes of morbidity & mortality	0	<5	0	0	<5	0	0	<5	0

Note: Counts less than 5 has been suppressed in this report to protect privacy and data confidentiality.

Note 2: Age standardised rates are not provided when the total event numbers for the population being studied are less than 20 due to unreliable rates that are derived.

Costs

Table 3: Cost of hospitalisation (\$) due to injury and poisoning by injury category, Cockburn LGA, WA, 2018.

Injury category	Total Cost
Transport accidents	\$ 2,576,641
Accidental falls	\$ 7,803,010
Exposure to mechanical forces	\$ 1,906,386
Accidental drowning, submersion, threats to breathing	\$ 13,026
Exposure to electricity, radiation, extreme temperature/pressure	\$ 34,336
Exposure to smoke, fire, flames, hot substances	\$ 470,052
Exposure to venomous plants, animals, forces of nature	\$ 30,216
Accidental poisoning	\$ 290,093
Other external causes of accidental injury	\$ 2,820,067
Intentional self-harm	\$ 897,667
Assault & other injury caused by other person(s)	\$ 580,533
Event of undetermined intent	\$ 364,395
Adverse effects due to drugs & other substances	\$ 114,386
Medical misadventure	\$ 84,505
Abnormal reaction following procedure	\$ 5,001,105
Sequelae of external causes of morbidity & mortality	\$ 4,724
Total	\$ 22,991,150

Emergency Department presentations

Table 4: Number and rates of ED presentations due to injury and poisoning by age groups, Cockburn LGA, WA, 2014 - 2018 (combined).

Numbers by age group					Total	Age group specific rates					ASR	ASR LCI	ASR UCI
0-14	15-24	25-44	45-64	65+		0-14	15-24	25-44	45-64	65+			
12,123	7,070	10,507	6,281	3,502	39,483	10,853	9,862	5,666	4,958	5,562	7,167	7,096	7,239

* All rates are per 100,000 population

ASR = Age-standardised rate; ASR LCI = 95 per cent lower confidence limit for ASR; ASR UCI = 95 per cent upper confidence limit for ASR.

Note 1: Counts less than 5 has been suppressed in this report to protect privacy and data confidentiality.

Note 2: Age standardised rates are not provided when the total event numbers for the population being studied are less than 20 due to unreliable rates that are derived.

Fatalities

Table 5: Number and rates of death due to injury and poisoning by injury category, Cockburn LGA, WA, 2013 – 2017 (combined).

Injury category	Total	ASR	ASR LCI	ASR UCI
Transport accidents (V00-V06,V09-V99,Y85)	25	4.6	2.8	6.4
Accidental falls (W00-W19)	52	11.1	8.1	14.2
Exposure to mechanical forces (W20-W46,W49-W61,W64)	N/A	N/A	N/A	N/A
Accidental drowning, submersion, threats to breathing (W65-W70,W73-W81,W83-W84)	N/A	N/A	N/A	N/A
Exposure to smoke, fire and flames; heat and hot substances (X00-X06,X08-X19)	N/A	N/A	N/A	N/A
Contact with venomous animals and plants; exposure to forces of nature (X20-X39)	N/A	N/A	N/A	N/A
Accidental poisoning (X40-X49)	26	4.7	2.9	6.5
Accidental exposure to other and unspecified factors (X50-X54,X57-X59)	6	N/A	N/A	N/A
Intentional self-harm (X60-X84,Y87.0)	62	11.7	8.8	14.6
Assault (X85-X99,Y00-Y09,Y35-Y36,Y87.1)	5	N/A	N/A	N/A
Event of undetermined intent (Y10-Y34,Y87.2)	N/A	N/A	N/A	N/A
Adverse effects due to drugs & other substances (Y40-Y59,Y88.0)	N/A	N/A	N/A	N/A
Abnormal reaction following procedure (Y83-Y84,Y88.3)	N/A	N/A	N/A	N/A
Sequelae of other accidents (Y86,Y89)	N/A	N/A	N/A	N/A
Total	176	32.1	22.5	41.7

* All rates are per 100,000 population

ASR = Age-standardised rate; ASR LCI = 95 per cent lower confidence limit for ASR; ASR UCI = 95 per cent upper confidence limit for ASR.

Note 1: Counts less than 5 has been suppressed in this report to protect privacy and data confidentiality.

Note 2: Age standardised rates are not provided when the total event numbers for the population being studied are less than 20 due to unreliable rates that are derived.

This document can be made available in alternative formats on request.

South Metropolitan Health Service

Fiona Stanley Hospital, Administration, Level 2,
14 Barry Marshall Parade, MURDOCH WA 6150
Postal address: Locked Bag 100 PALMYRA DC WA 6961
www.southmetropolitan.health.wa.gov.au

Compiled: South Metropolitan Health Service, 2020

© State of Western Australia, South Metropolitan Health Service, 2020

Copyright to this material produced by the Western Australian Department of Health belongs to the State of Western Australia, under the provisions of the *Copyright Act 1968* (Commonwealth of Australia). Apart from any fair dealing for personal, academic, research or non-commercial use, no part may be reproduced without written permission of the South Metropolitan Health Service, Western Australian Department of Health. The Department of Health is under no obligation to grant this permission. Please acknowledge the WA Department of Health when reproducing or quoting material from this source.