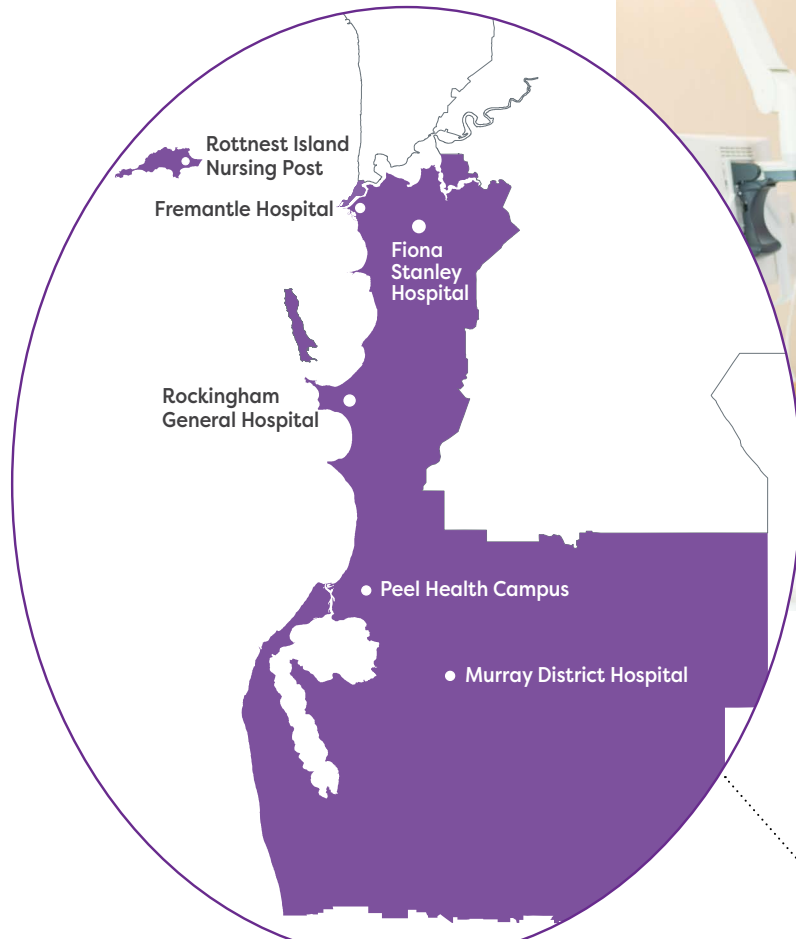




Who we cared for

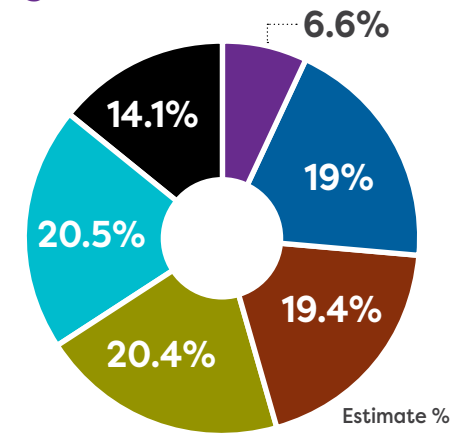


668,597
people live in
our primary
catchment area

84 years
average life
expectancy at
birth

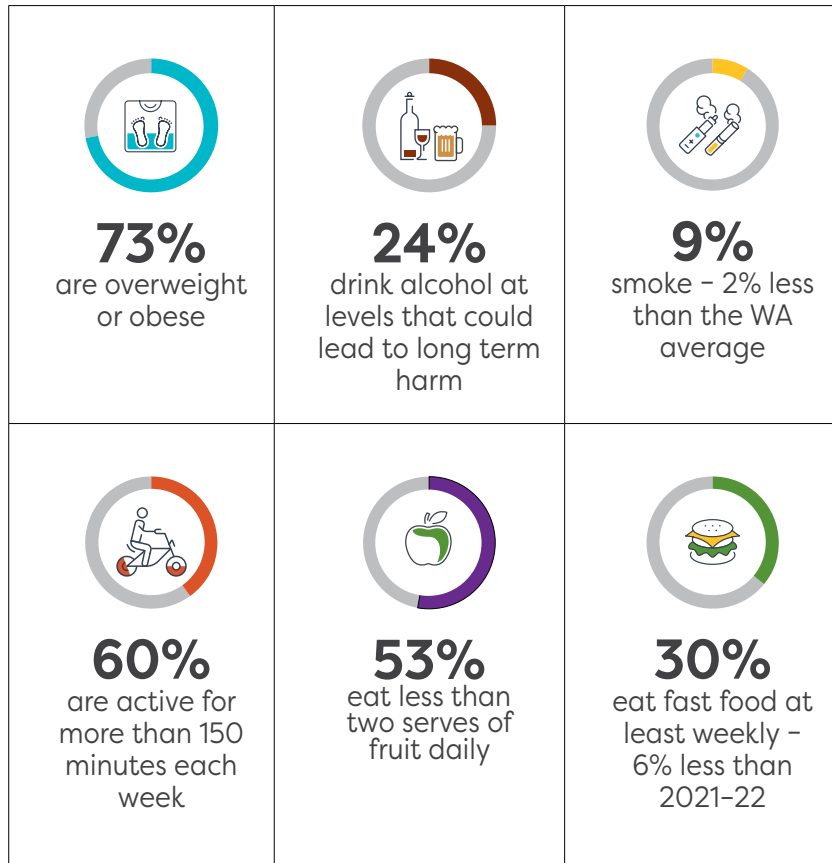
33%
born overseas

Population by the generations

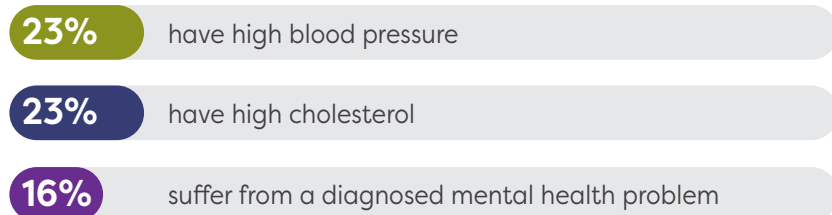


- Gen Alpha 0 to 9 years
- Gen X 40 to 54 years
- Gen Z 10 to 24 years
- Boomers 55 to 74 years
- Gen Y 25 to 39 years
- Traditionalist 75 years and over

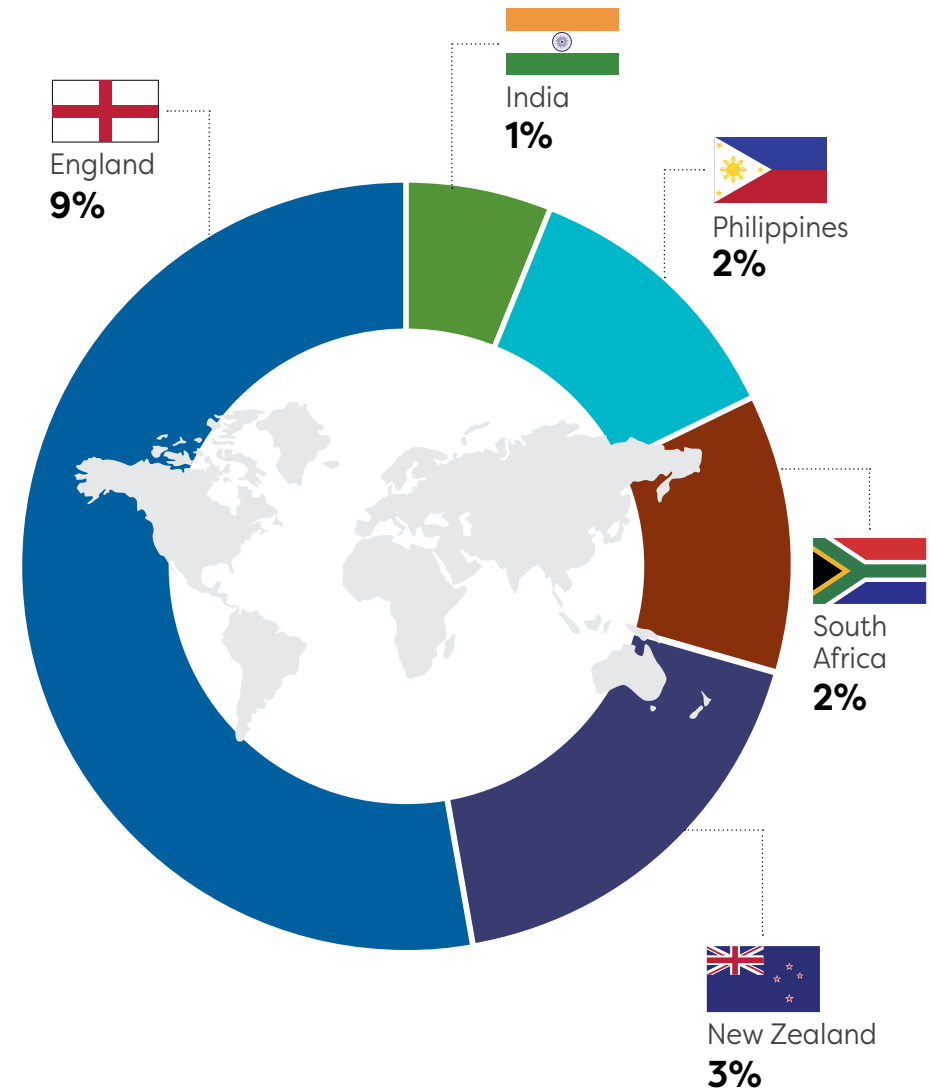
Lifestyle of our adult population



Health of our adult population

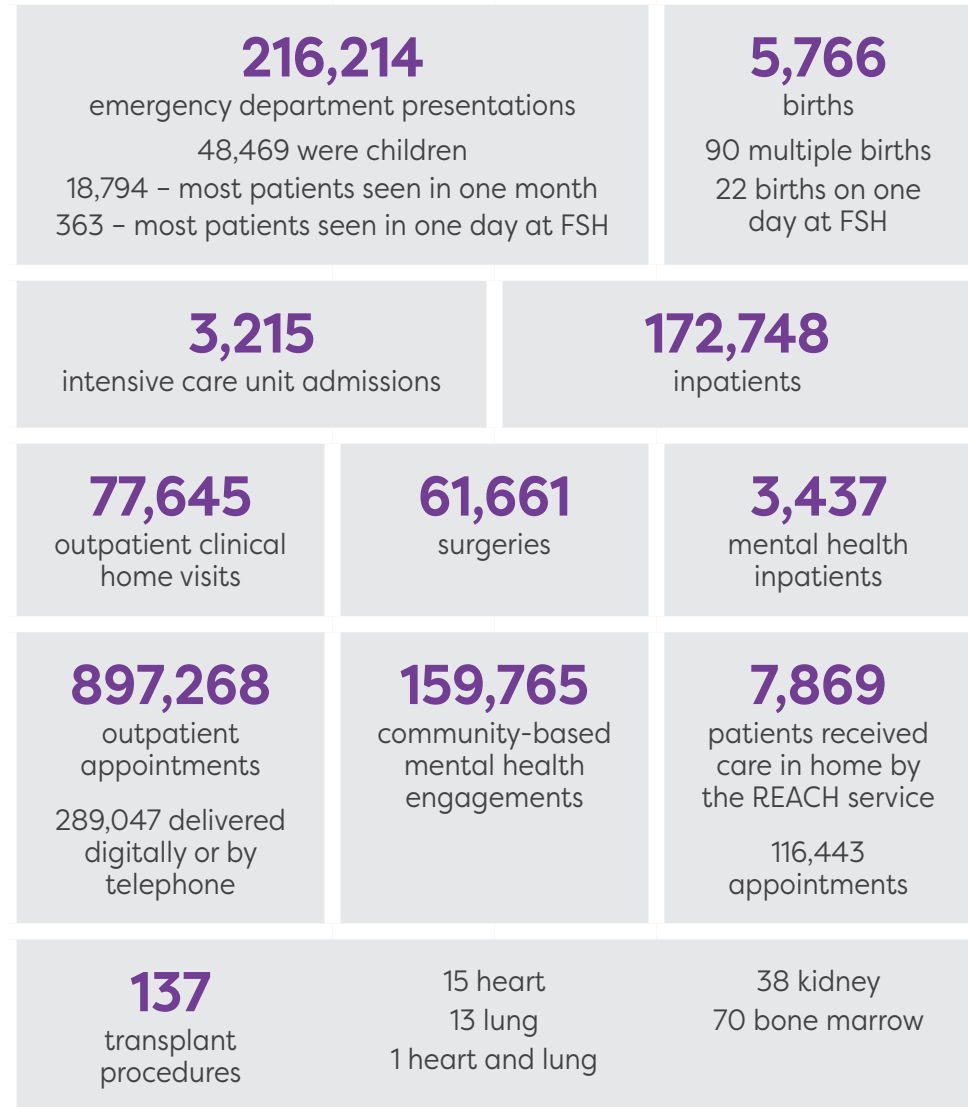
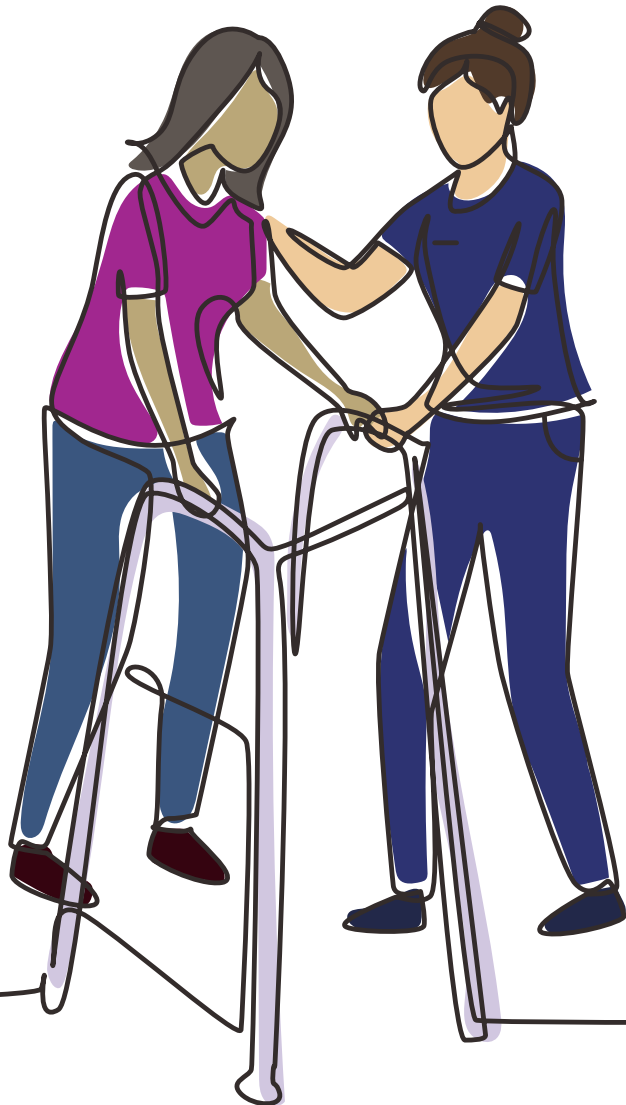


Top 5 countries of birth (excluding Australia)



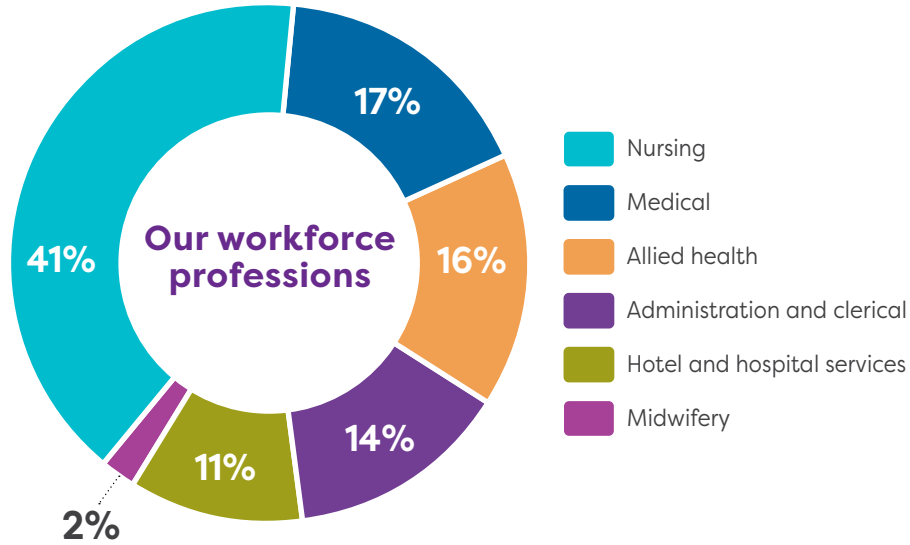
The care we provided

Across our health services, our teams delivered the following care to our community.

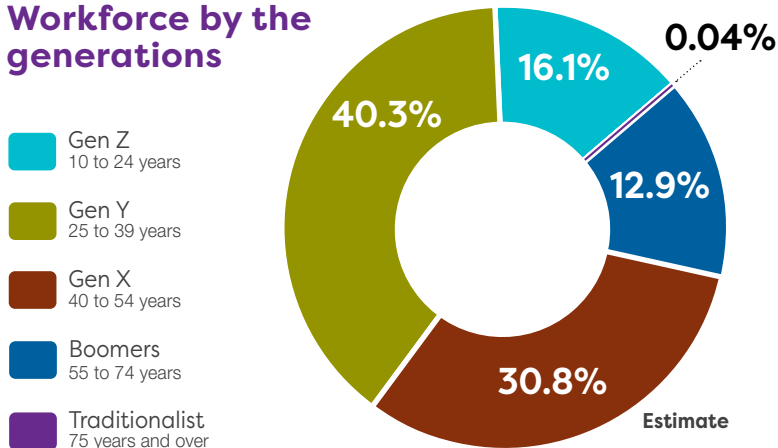


Our workforce

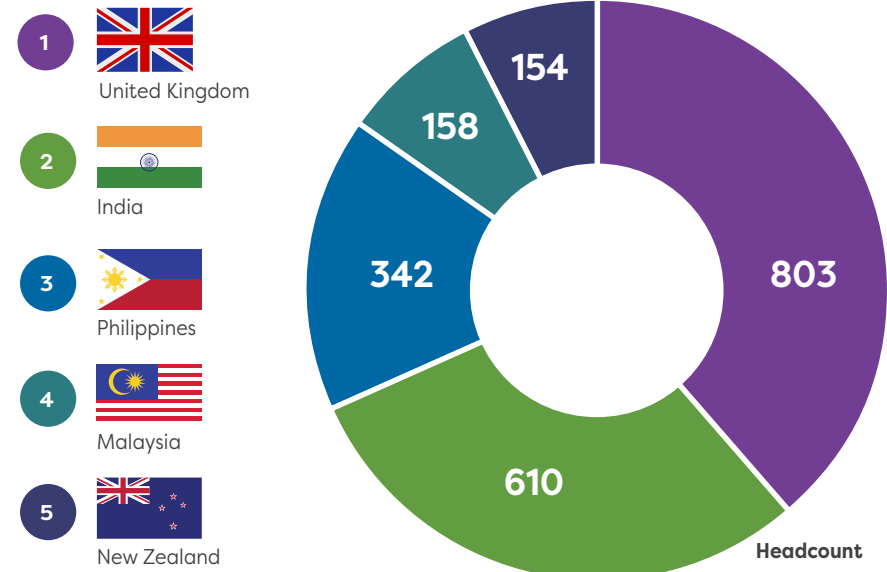
We have **12,147** staff working across **9,272** full-time equivalent positions.



Workforce by the generations



Top 5 countries of birth (excluding Australia)



Length of service of our workforce

